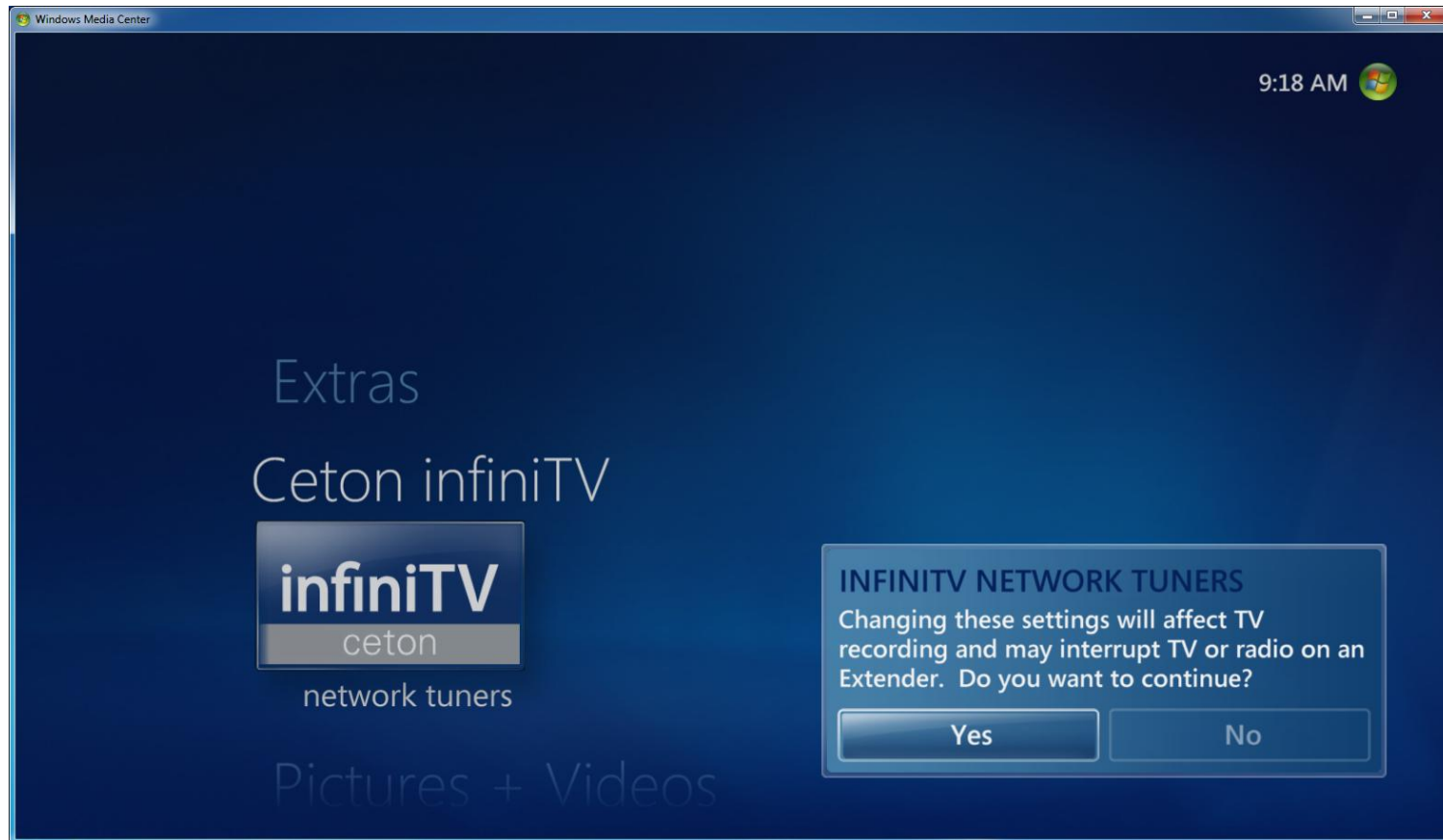


## 1. Run Installation Wizard and Open Ceton Network Tuners in Media Center



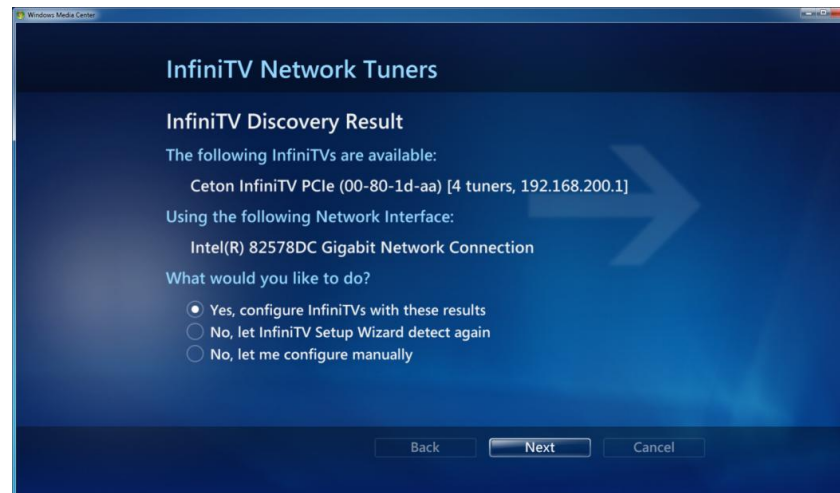
Install Network Tuners setup into the Media Center User Interface using the 32 or 64 bit Installation Wizard. Once complete, Network Tuners setup must be run on all PCs which will utilize Ceton InfiniTV tuners. First run Network Tuners setup on the host PC which contains an internal PCIe InfiniTV card or has an external USB InfiniTV attached before setting up any client PCs. If there are multiple Ceton InfiniTVs, all tuners from these devices will be available on the Network to be assigned to any PC.

## 2. Select Setup InfiniTVs



Select “Setup InfiniTVs” to proceed with Network Tuners setup. “Reset InfiniTVs to factory settings” will reset all InfiniTVs on the Network back to their original settings.

## 3. Configure InfiniTV with Discovery Results



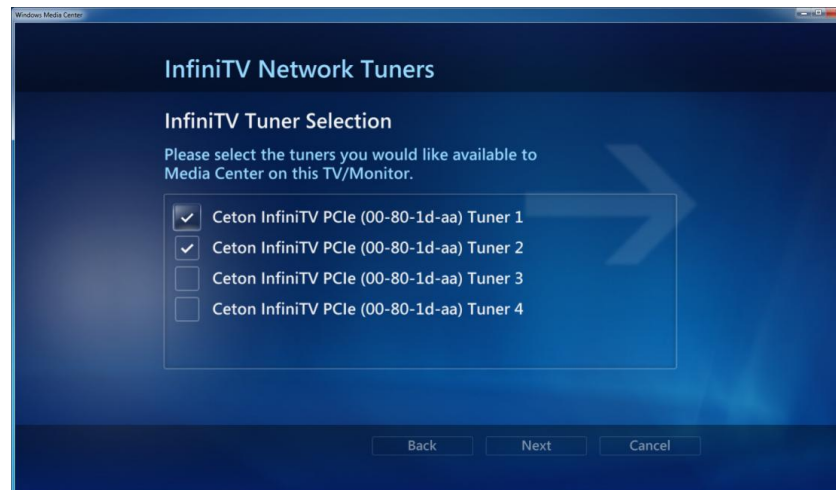
If there are multiple Network Interface Controllers (NIC) available in the PC, Network Tuners setup uses the fastest enable NIC as the default. Selecting the “configure manually” option will allow you to choose any available wired or wireless NIC.

## 4. Configure Firewall



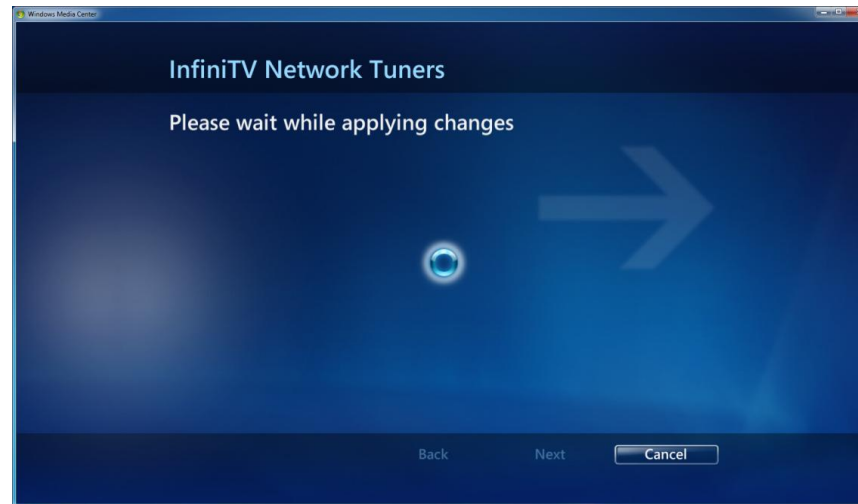
The Firewall settings are automatically configured for Windows Firewall. Selecting another option lists the required port settings for other Firewalls. These must be configured manually.

## 5. Select Tuners for this TV / Monitor



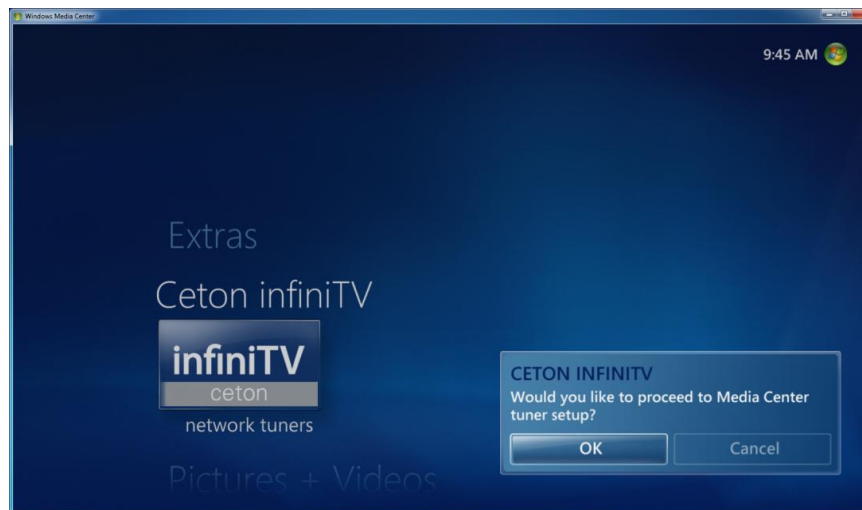
Select the tuners to be assigned to the TV/Monitor attached to this PC.

## 6. Apply Configuration Changes



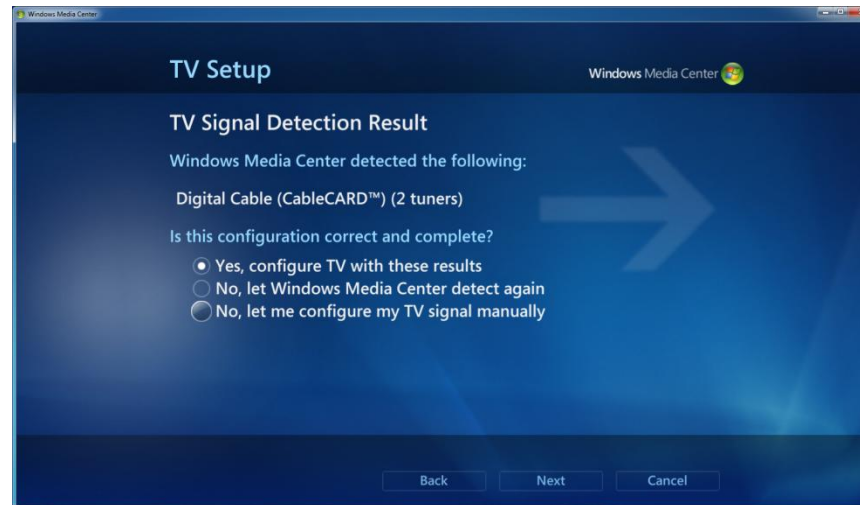
Applying changes sets up the network and assigns the selected tuners to this PC.

## 7. Proceed to Media Center Setup



Media Center tuner setup must be run in order to configure the selected tuners for use in this PC with Media Center.

## 8. TV Signal Detection Results



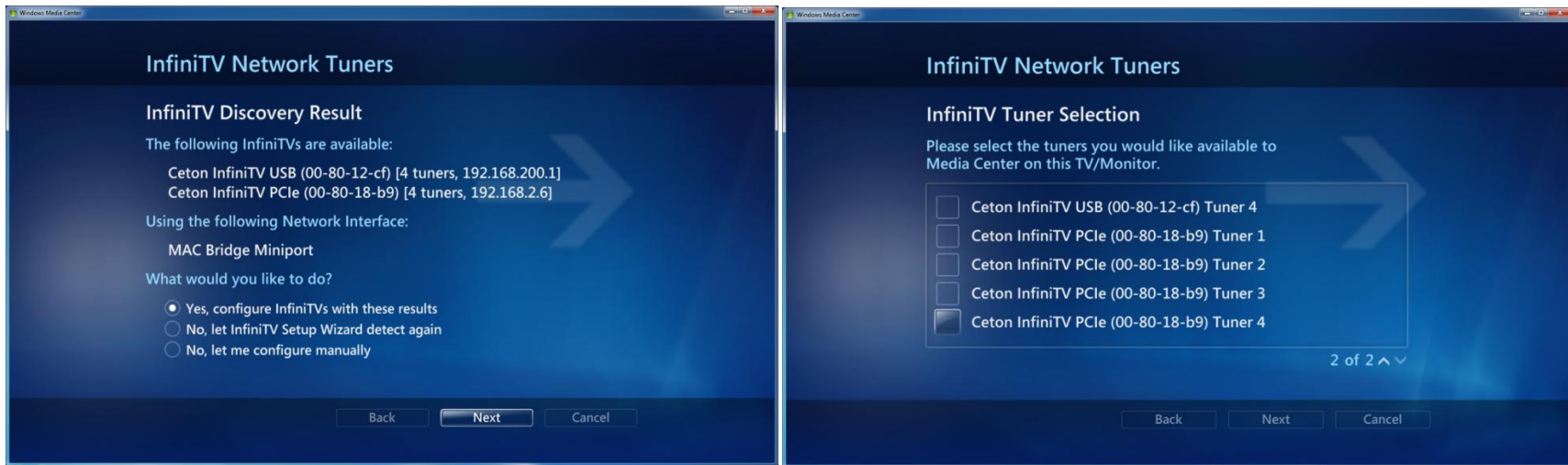
Media Center finds only the tuners which were previously selected for this PC.

## 9. TV Signal Setup Finished



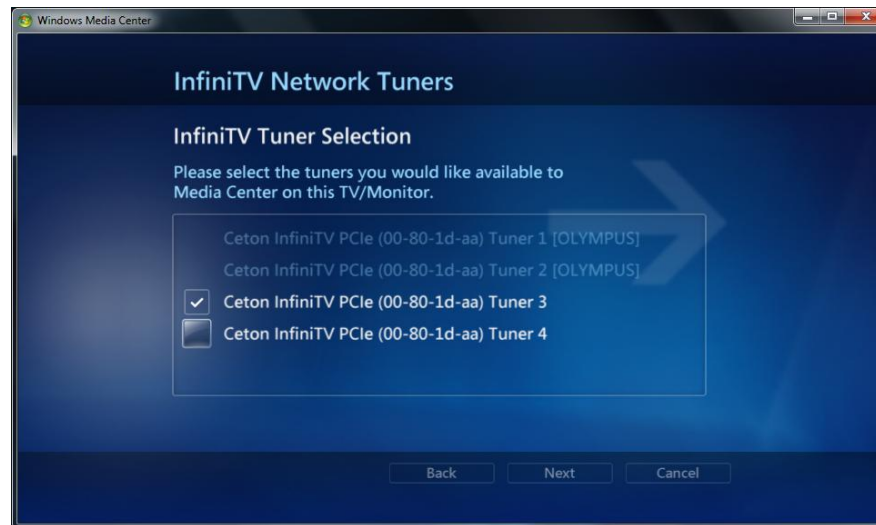
Finish Media Center setup and enjoy live cable TV. As setup in this example, Media Center will now be able to record two live cable TV channels on this PC with the other two tuners available to be assigned to other PCs.

## 10. Multiple InfiniTV devices



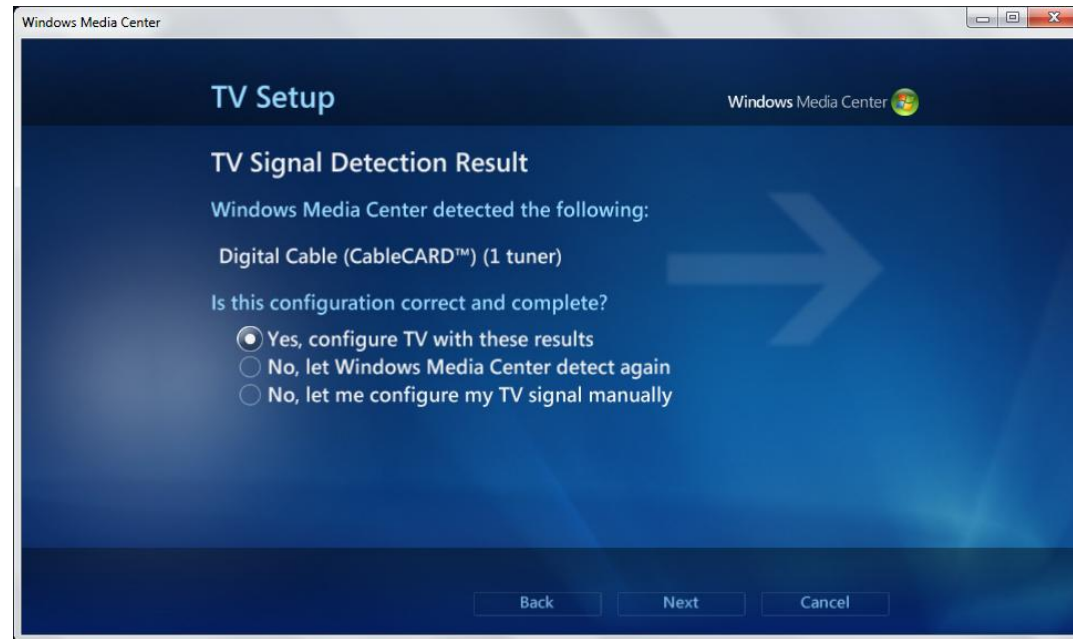
Multiple Ceton InfiniTV devices with different interfaces can be utilized to provide more tuners for PCs on the Network.

## 11. Configure Client PCs



Network Tuners setup must be run on each client PC to configure the PCs for receiving cable TV. Only tuners which have not been previously selected for use on other PCs will be available. Tuners previously selected are grayed out with the PC assigned to each tuner shown.

## 12. Media Center Setup on Client PCs



Complete Media Center setup on each client PC and enjoy live cable TV on multiple PCs, Laptops, All-in-Ones and tablet PCs from a single cable TV connection. Any number of tuners can be assigned to any PCs up to the limit of available tuners. A Gigabit Ethernet Network is recommended if more than one tuner is assigned to the Network.